

**sky 760**  
CRANES®

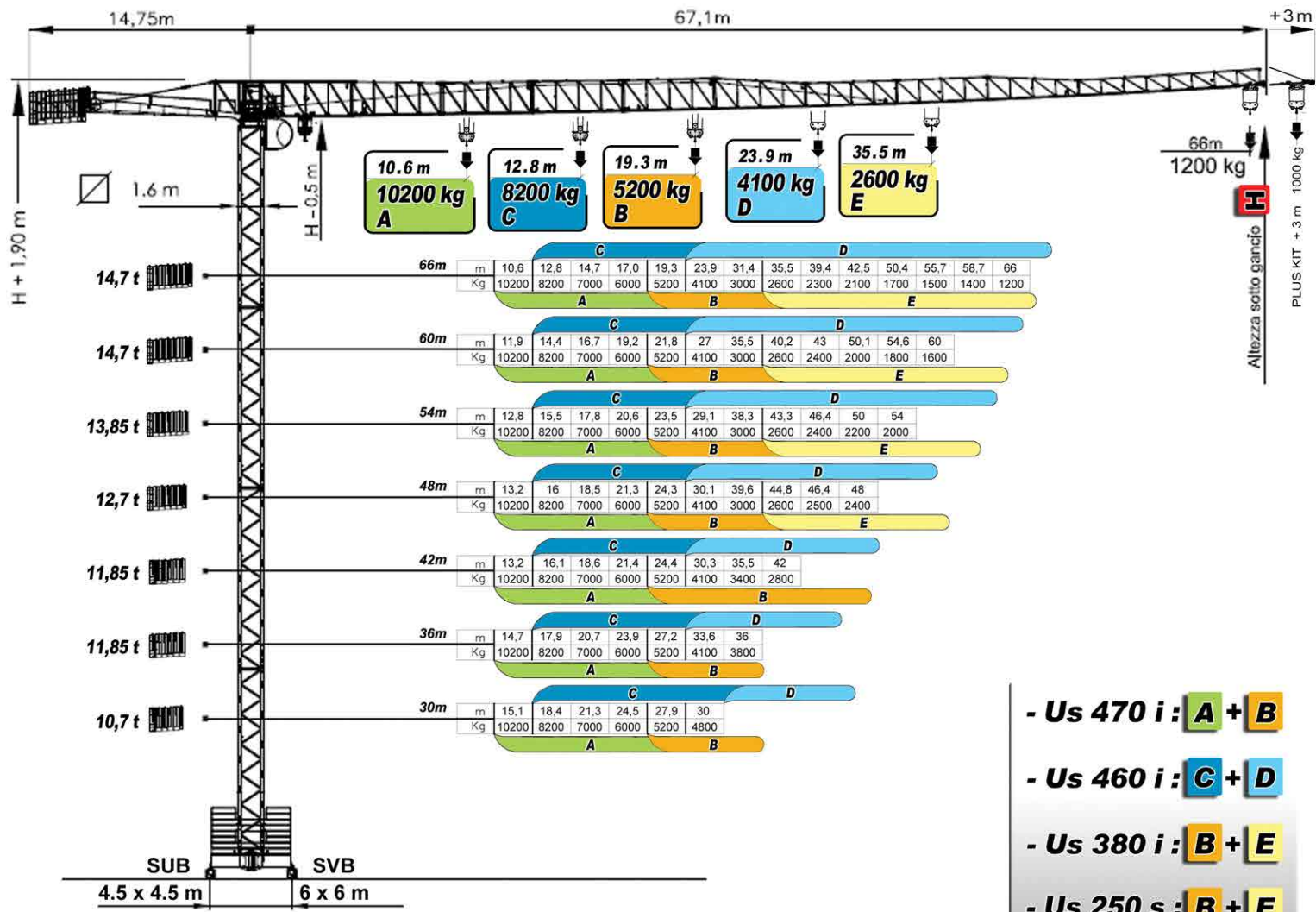


**sky**  
CRANES®





I dati e le misure hanno un valore indicativo, pertanto non sono impegnativi - Technical data are not binding and are only indicative.



### ALTEZZA SOTTO GANCIO

HEIGHT UNDER HOOK

- H - SGT** = LUNGHEZZA TORRE / MAST COMPOSITION + **1,3 m**
- H - SUB** = LUNGHEZZA TORRE / MAST COMPOSITION + **2,4 m**
- H - SUB+RE** = LUNGHEZZA TORRE / MAST COMPOSITION + **2,9 m**

### PESI

WEIGHTS

- 3850 kg (tower base)
- 8760 kg (jib)
- 1860 kg (jib section)
- 3720 kg (jib section)
- 2180 kg (tower section)
- 2000 kg (tower section)
- 1845 kg (tower section)
- 3380 kg (tower section)

### COMPOSIZIONE TORRE

MAST COMPOSITION

**ELEMENTI TT / TT ELEMENTS**

L = 6 m TTF - 12 m TTN  
A = B = 1,6 m

COMPOSIZIONE LIBERA / FREE COMPOSITION  
LUNGHEZZA TORRE / MAST LENGTH  
**12 m >>> 48 m**

**ELEMENTI PT / PT ELEMENTS**

L = 6 m PTF - 12 m PTN  
A = 0,23 m B = 1,45 m  
4 PEZZI / 4 UNITS PACK L x 0,48 x 1,53

COMPOSIZIONE LIBERA / FREE COMPOSITION  
LUNGHEZZA TORRE / MAST LENGTH  
**12 m >>> 48 m**

**ELEMENTI HTD / HTD ELEMENTS**

L = 4 m  
A = 0,39 m B = 1,59 m  
4 PEZZI / 4 UNITS PACK L x 0,73 x 1,82

COMPOSIZIONE LIBERA / FREE COMPOSITION  
LUNGHEZZA TORRE / MAST LENGTH  
**12 m >>> 48 m**

**TTA +1 m**

**JUMPER**  
SMONTABILE DALLA GRU E SEZIONABILE PER TRASPORTO / REMOVABLE AND DECOMPOSABLE FOR TRANSPORT FACILITATION

SISTEMA SOPRALZO IDRAULICO / CLIMBING SYSTEM

**SCS ANCORAGGI A FABBRICATO / BUILDING ANCHORAGE**

MAX 5 m

**2 KIT = MAX 84 m**

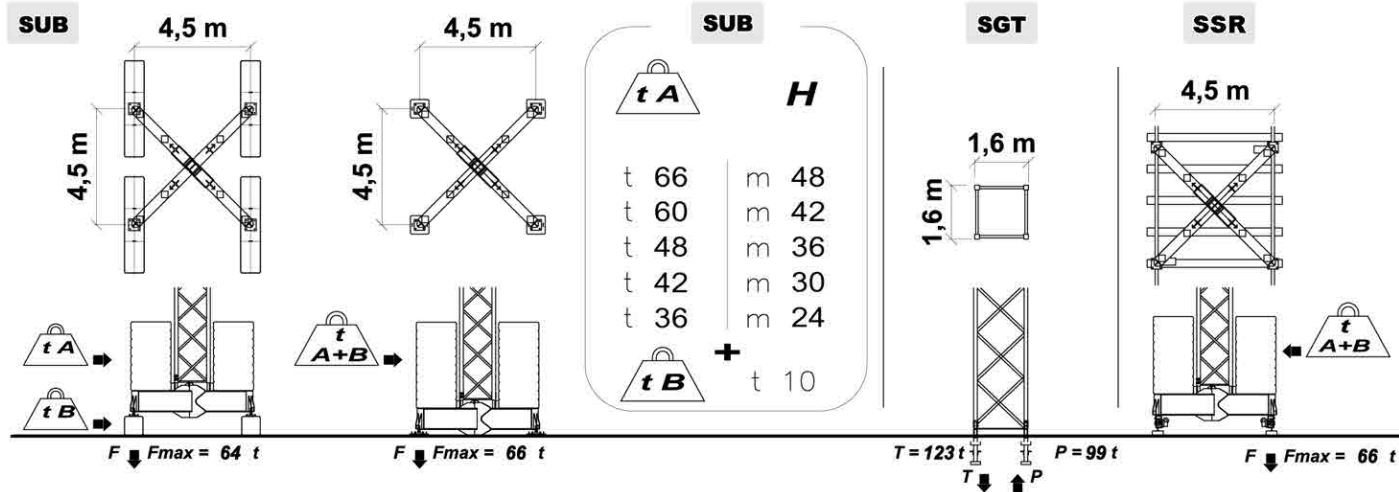
**3 KIT = MAX 120 m**

LUNGHEZZA TORRE / MAST LENGTH  
RIDUZIONE PORTATE PROGRESSIVA / PROGRESSIVE LOAD REDUCTION  
H MAX = LOAD - 200 Kg



# SUPPORTI

GROUND SUPPORTS



# GRUPPO MOTORE

MOTOR GROUP



	Us 470 i	Us 460 i	Us 380 i	Us 250 s
	400 V (+/- 5%) - 50 Hz 46 kW Trifase - Threephase	400 V (+/- 5%) - 50 Hz 40 kW Trifase - Threephase	400 V (+/- 5%) - 50 Hz 31 kW Trifase - Threephase	400 V (+/- 5%) - 50 Hz 28 kW Trifase - Threephase
SOLLEVAMENTO HOIST	kg	kg	kg	kg
	m/min	m/min	m/min	m/min
	kW	kW	kW	kW
	0 < • < 5200 1	0 < • < 4100 1	0 < • < 2600 1	0 < • < 2600 1
	6	5	5	6
	30	24	18	4
0 < • < 5200 2	0 < • < 4100 2	0 < • < 2600 2	0 < • < 2600 2	
26	33	32	25	
0 < • < 3000 3	0 < • < 2600 3	0 < • < 1300 3	0 < • < 1300 3	
46	50	56	50	
0 < • < 3000 4	0 < • < 2600 4	0 < • < 1300 4		
74 > m/min > 46 VARIOMATIC	76 > m/min > 50 VARIOMATIC	75 > m/min > 56 VARIOMATIC		
ELECTRONIC FINE ADJUSTMENT	ELECTRONIC FINE ADJUSTMENT	ELECTRONIC FINE ADJUSTMENT		
0 < • < 10200 1	0 < • < 8200 1	0 < • < 5200 1	0 < • < 5200 1	
3	2,5	2,5	3	
0 < • < 10200 2	0 < • < 8200 2	0 < • < 5200 2	0 < • < 5200 2	
13	16,5	16	12,5	
0 < • < 6000 3	0 < • < 5200 3	0 < • < 2600 3	0 < • < 2600 3	
23	25	28	25	
0 < • < 6000 4	0 < • < 5200 4	0 < • < 2600 4		
37 > m/min > 23 VARIOMATIC	38 > m/min > 25 VARIOMATIC	37,5 > m/min > 28 VARIOMATIC		
ELECTRONIC FINE ADJUSTMENT	ELECTRONIC FINE ADJUSTMENT	ELECTRONIC FINE ADJUSTMENT		
kg	kg	kg	kg	
m/min	m/min	m/min	m/min	
kW	kW	kW	kW	
0 < • < MAX 1	0 < • < MAX 1	0 < • < MAX 1	0 < • < MAX 1	
14	14	12	29	
0 < • < MAX 2	0 < • < MAX 2	0 < • < MAX 2	0 < • < MAX 2	
39	39	29	58	
0 < • < 3000 3	0 < • < 2600 3	0 < • < 2600 3		
78	78	58		
ELECTRONIC FINE ADJUSTMENT	ELECTRONIC FINE ADJUSTMENT	ELECTRONIC FINE ADJUSTMENT		
ROTAZIONE SLEWING	rpm			Nm
	0	0,3	1	2 x 65
TRASL. RAIL	m/min			kW
	12	4 x 2,2		

# TUTOR System

THE CRANE BRAIN



Sistema optional sulle versioni Us 470 i, Us 460 i e Us 380 i. Permette un controllo costante di carico, vento e livello, gestisce le situazioni di allarme e preallarme attraverso i segnali luminosi del semaforo e informazioni trasmesse al monitor in cabina (optional) e al display del radiocomando.

Optional System for Us 470 i, Us 460 i and Us 380 i versions that gives a constant control for load, wind and level. It manages the alarm and pre-alarm situations giving information by the light signal, the cabin monitor (optional) and the radio display.

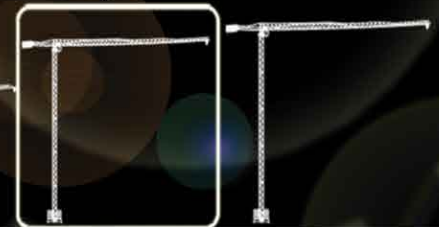




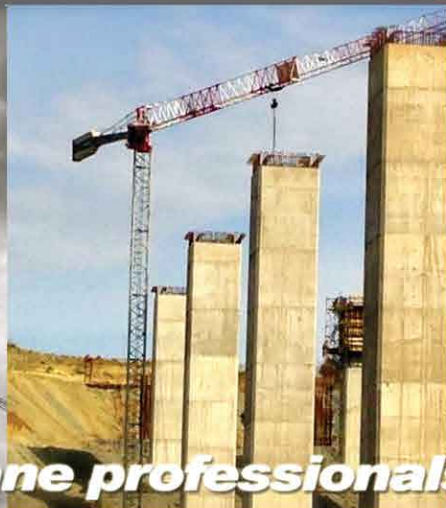
# sky760 CRANES

- Possibilità di montaggio braccio completamente assemblato a terra completo di funi, carrello e argani
  - Possibilità di montaggio braccio a singoli elementi senza necessità di spazio al suolo
    - Scelta di gruppi argano con portate fino a 10,2 t
- Versione Tutor con gestione elettronica dei dati di carico, vento, programma e movimento visualizzabili su monitor in cabina o su radiocomando
  - Scelta di gruppi base con basamenti livellabili, traslazione o elementi torre annegati
    - Rotazione elettronica a controllo diretto per accostamenti facilitati
- Possibility of mounting the jib completely assembled on the ground, comprising the ropes, trolley and winches
  - Possibility of mounting the jib in single elements without any ground space needed
    - Selection of the winch version, load capacity up to 10,2 t
- Tutor version with electronic handling of load, wind, program and movement data with visualization on cabin monitor or on radio joystick
  - Selection of the base groups either with leveling bases, rails translation or embedded tower elements
    - Electronic slewing device with direct movement control for easy approaching

## Sky 760



MACCHINA COSTRUITA IN ITALIA CON MATERIALI E COMPONENTI EUROPEI



*the crane professionals*

**sky**  
CRANES®

[www.grudalbe.com](http://www.grudalbe.com)

**GRU DALBE** srl

via Europa, 84 - 21015 Lonate P. - VA - Italy

Tel +39 03 31 66 84 25 r.a.

Fax +39 03 31 66 87 62

[db@grudalbe.com](mailto:db@grudalbe.com)

AGENTE DI ZONA

