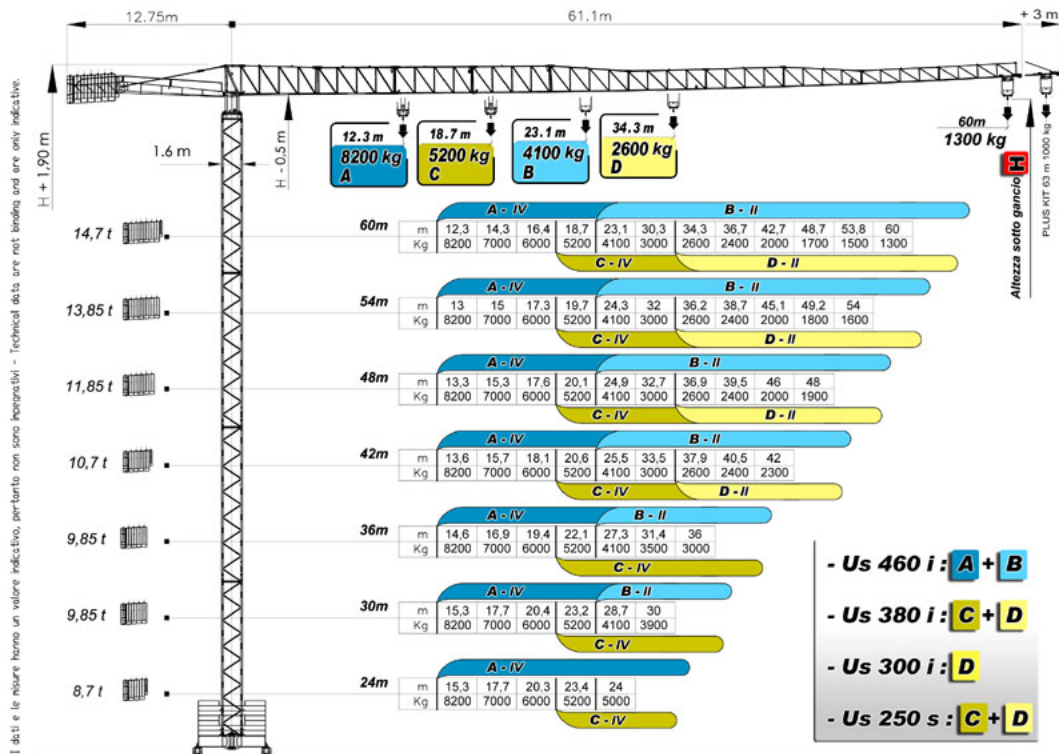


sky600
CRANES



sky
CRANES®





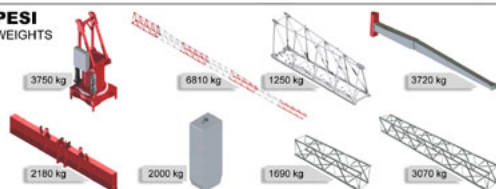
ALTEZZA SOTTO GANCIO

HEIGHT UNDER HOOK

H = SGS	= LUNGHEZZA TORRE / MAST COMPOSITION	+ 2,3 m
H = STB	= LUNGHEZZA TORRE / MAST COMPOSITION	+ 3,4 m
H = STB + A	= LUNGHEZZA TORRE / MAST COMPOSITION	+ 3,9 m

PESI

WEIGHTS



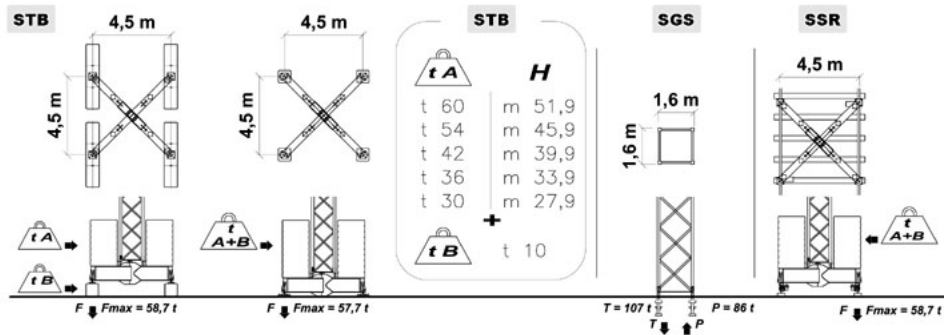
COMPOSIZIONE TORRE

MAST COMPOSITION

<p>ELEMENTI TR / TR ELEMENTS</p> <p>L = 6 m TRF - 12 m TRN A = B = 1,8 m</p> <p>COMPOSIZIONE LIBERA / FREE COMPOSITION LUNGHEZZA TORRE / TOWER HEIGHT</p> <p>12 m <math>\rightarrow</math> 48 m</p>	<p>ELEMENTI PR / PR ELEMENTS</p> <p>L = 6 m PRF - 12 m PRN A = 0,23 m B = 1,45 m 4 PEZZI / 4 UNITS PACK L x 0,48 x 1,53</p> <p>COMPOSIZIONE LIBERA / FREE COMPOSITION LUNGHEZZA TORRE / TOWER HEIGHT</p> <p>12 m <math>\rightarrow</math> 48 m</p>	<p>ELEMENTI HRD / HRD ELEMENTS</p> <p>L = 4 m A = 0,39 m B = 1,59 m 4 PEZZI / 4 UNITS PACK L x 0,73 x 1,82</p> <p>COMPOSIZIONE LIBERA / FREE COMPOSITION LUNGHEZZA TORRE / TOWER HEIGHT</p> <p>12 m <math>\rightarrow</math> 48 m</p>	<p>TRA 9,1 m</p> <p>JUMPER SMONTABILE DALLA GRUE SEZIONALE PER TRASPORTO / REMOVABLE AND DISMOUNTABLE FOR TRANSPORT FACILITATION</p> <p>SISTEMA SOPRALZO / ORAULICO / CLIMBING SYSTEM</p>	<p>SCS ANCORAGGI A FABBRICATO / BUILDING ANCHORAGE</p> <p>MAX 5 m</p> <p>FORMA 9800 83 m</p> <p>FORMA 9800 105 m</p> <p>LUNGHEZZA TORRE / TOWER HEIGHT</p> <p>PRODUZIONE PORTATA PROGRESSIVA / PROGRESSIVE LOAD REDUCTION H MAX + LOAD : 200 kg</p>
--	---	--	---	--

SUPPORTI

GROUND SUPPORTS



GRUPPO MOTORE

MOTOR GROUP



Us 460 i

400 V (+/- 5%) - 50 Hz
 40 kW
 Trifase - Threephase

kg	m/min	Hp
0 < <4100 1	5	
0 < <4100 2	33	33
0 < <2600 3	50	
0 < <2600 4	76>m/min>50 VARIOMATIC	

ELECTRONIC FINE ADJUSTMENT

0 < <8200 1	2,5	
0 < <8200 2	16,5	33
0 < <5200 3	25	
0 < <5200 4	38>m/min>25 VARIOMATIC	

ELECTRONIC FINE ADJUSTMENT

kg	m/min	Hp
0 < <MAX 1	8	
0 < <MAX 2	34	7
0 < <2600 3	68	

ELECTRONIC FINE ADJUSTMENT

Us 380 i

400 V (+/- 5%) - 50 Hz
 31 kW
 Trifase - Threephase

kg	m/min	Hp
0 < <2600 1	5	
0 < <2600 2	32	25
0 < <1300 3	56	
0 < <1300 4	75>m/min>56 VARIOMATIC	

ELECTRONIC FINE ADJUSTMENT

0 < <5200 1	2,5	
0 < <5200 2	16	25
0 < <2600 3	28	
0 < <2600 4	37,5>m/min>28 VARIOMATIC	

ELECTRONIC FINE ADJUSTMENT

kg	m/min	Hp
0 < <MAX 1	8	
0 < <MAX 2	26	3
0 < <2600 3	52	

ELECTRONIC FINE ADJUSTMENT

Us 300 i

400 V (+/- 5%) - 50 Hz
 24 kW
 Trifase - Threephase

kg	m/min	Hp
0 < <2600 1	5	
0 < <2600 2	22	15
0 < <1300 3	43	
0 < <650 4	53>m/min>43 VARIOMATIC	

ELECTRONIC FINE ADJUSTMENT

0 < <5200 1	3	5
0 < <5200 2	12,5	20
0 < <2600 3	25	20

ELECTRONIC FINE ADJUSTMENT

kg	m/min	Hp
0 < <MAX 1	8	
0 < <MAX 2	26	3
0 < <MAX 3	52	

ELECTRONIC FINE ADJUSTMENT

Us 250 s

400 V (+/- 5%) - 50 Hz
 28 kW
 Trifase - Threephase

kg	m/min	Hp
0 < <2600 1	6	5
0 < <2600 2	25	20
0 < <1300 3	50	20

ELECTRONIC FINE ADJUSTMENT

0 < <5200 1	3	5
0 < <5200 2	12,5	20
0 < <2600 3	25	20

ELECTRONIC FINE ADJUSTMENT

kg	m/min	Hp
0 < <MAX 1	25	2
0 < <MAX 2	50	3

ELECTRONIC FINE ADJUSTMENT

SOLLEVAMENTO HOIST

CARRELLO TROLLEY

ROTAZIONE SLEWING

TRASL. RAIL

rpm	Nm
0	0,3
0,3	0,8
	2

ELECTRONIC SENSITIVE SLEWING

m/min	Hp
12	4 x 3

TUTOR System

THE CRANE BRAIN



Sistema optional sulle versioni Us 460 i e Us 380 i. Permette un controllo costante di carico, vento e livello, gestisce le situazioni di allarme e preallarme attraverso i segnali luminosi del semaforo e informazioni trasmesse al monitor in cabina (optional) e al display del radiocomando.

Optional System for Us 460 i and Us 380 i versions that gives a constant control for load, wind and level. It manages the alarm and pre-alarm situations giving information by the light signal, the cabin monitor (optional) and the radio display.



LIGHT SIGNAL

PANEL INSIDE THE CABIN

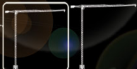
sky600



CRANES

- Possibilità di montaggio diretto completamente assemblato a terra completo di funi, cancelli e argani
- Possibilità di montaggio diretto a singoli elementi senza necessità di spazio al suolo
 - Scelta di gruppi argano con portata fino a 8,2 t
- Versione Tutor con gestione elettronica dei dati di carico, vento, programma e movimento visualizzabili su monitor in cabina o su radiocomando
- Scelta di gruppi base con basamenti livellabili, traslazione o elementi torre annessi
- Rotazione elettronica a controllo diretto per accostamenti facilitati

- Possibility of mounting the jib completely assembled on the ground, comprising the ropes, trolley and winches
- Possibility of mounting the jib in single elements without any ground space needed
 - Selection of the winch version, load capacity up to 8.2 t
- Tutor version with electronic handling of load, wind, program and movement data with visualization on cabin monitor or on radio joystick
- Selection of the base groups either with leveling bases, rails translation or embedded tower elements
 - Electronic slewing device with direct movement control for easy approaching

Sky 600



  PRODOTTA E COSTRUITA IN ITALIA CON MATERIALI E COMPONENTI EUROPEI

the crane professionals

sky
CRANES

GRU DALBE srl
via Europa, 84 - 21015 Lonate P. - VA - Italy
Tel +39 03 31 66 84 25 r.a.
Fax +39 03 31 66 87 62
db@grudalbe.com

AGENTE DI ZONA

www.grudalbe.com

DB
DALBE